

What to see & do at Champoeg



1
Pioneer Memorial Building, Pavilion, & Monument Plaza
 Accessible Facility, Accessible Restroom

The park began here! The Monument Plaza is a lovely place to sit and enjoy the river. Site of the 1843 vote to form the first government in the Northwest, and also of the famous Hudson's Bay Granary, destroyed in the great 1861 flood. Huge annual celebrations began in 1901 when the monument was erected. The 1918 Pioneer Memorial Building was the park's visitor center until 1977.

Can you find the **Provisional Government Park Cottonwood?** It was named an Oregon Heritage Tree in 2009!



Prairies

Maintained by Native American fires, prairies once covered the Willamette Valley. The restored Wet Prairie (wet until summer) has a great variety of plant and bird species. The Upland (or "Dry") Prairie is currently being restored.

Trails



The paved **Bicycle Trail**, for wheels or feet, runs nearly four miles from one end of the park to the other. The western part is nearly flat until the Ryan Creek bridge. It goes through meadows and open groves of trees, and bluebirds are often present. The eastern part has more hills and forest, with views of the river.

The **Townsite Trail** (unpaved, no bicycles) is a beautiful, lightly shaded walk along the river. The loop it forms with the Bicycle Trail is about 2.5 miles long, and is one of our most popular walks.

The **Pavilion Trail** (paved, no bicycles) takes you closer to the river than any other trail. Numerous wildflowers in spring. (Please don't pick any flowers!) Access is down steep slopes or stairs.

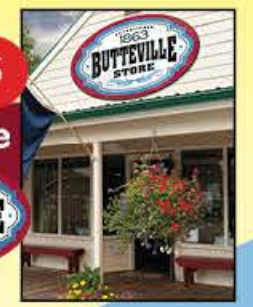
The **Kitty Newell Trail** (unpaved, no bicycles) runs along part of the old wagon road to Oregon City, and includes a loop for views of forest and river. Ask about Kitty Newell at the Visitor Center.

La Butte

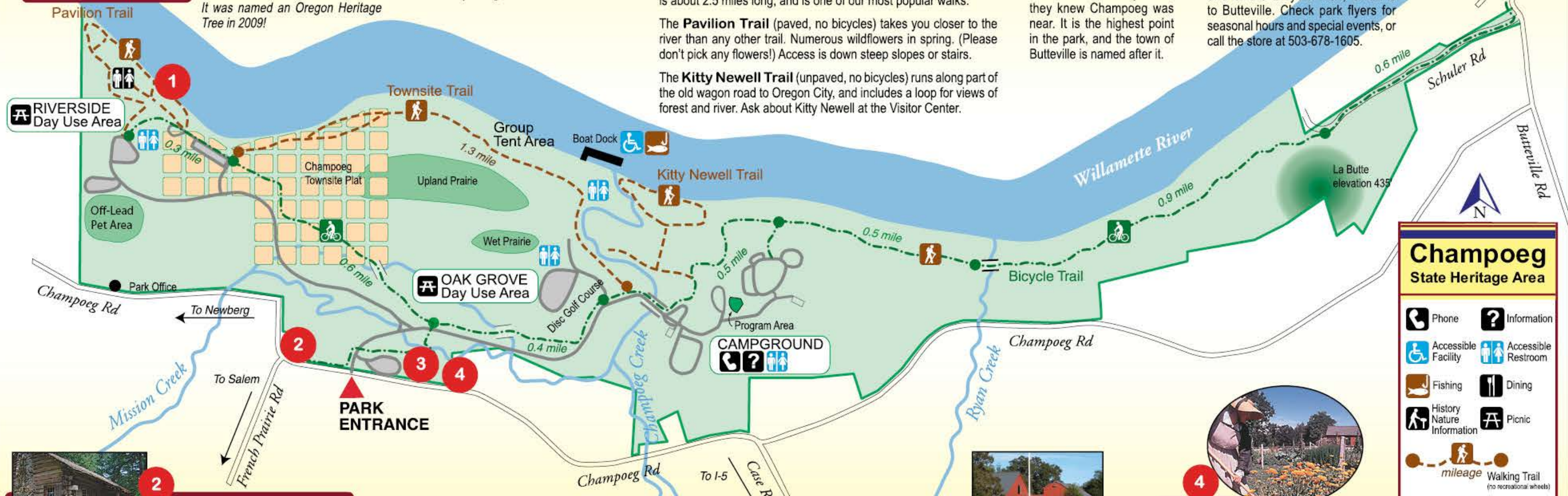


This odd, round hill, standing by itself, was an important landmark for Native Americans and trappers who paddled canoes up the river. French Canadian trappers named it La Butte - "The Hill" - and when they saw it, they knew Champoeg was near. It is the highest point in the park, and the town of Butteville is named after it.

Historic Butteville Store



The oldest continuously-operating store in Oregon, established in 1863. Operated by Friends of Historic Champoeg. Café, ice cream, berry pies, cold drinks, snacks, and coffee as well as Oregon art and mementos. Reward yourself for reaching the end of the Bicycle Trail, or drive to Butteville. Check park flyers for seasonal hours and special events, or call the store at 503-678-1605.



2
Pioneer Mothers Memorial Cabin



2
Robert Newell House Museum

The log Cabin (built as a museum in 1931) has been relocated and will be reconstructed at this location. The reconstructed 1850s Robert Newell House shows what a nice home was like during Champoeg's heyday. Museum complex includes a mid-19th century school and a jail. Both museums are operated by the DAR, and have separate entrance fees. For more information on both museums, call 503-678-5537, or visit www.newellhouse.com.

Champoeg Townsite Plat

The town of Champoeg had a population of about 200 when the flooding river completely destroyed it in 1861. Look for wooden posts with the street names, marking where the intersections used to be. Although this map shows how the town was platted, only about 12 blocks were actually developed, centered on Napoleon Street (which you can find), near the river. To the east, Robert Newell's first house has been the site of the park's most recent and successful archeology. (The site is not marked.)

Visitor Center & Champoeg Store



Many interesting things have happened at Champoeg over the centuries, and you can learn about them at the Visitor Center. Come here for free exhibits, videos, information and advice. Plus, purchase park passes, tours, membership to Friends of Historic Champoeg and more. The Champoeg Store sells many items to help make your visit memorable. Open daily except Thanksgiving and Christmas. Call 503-678-1251 x221.

Donald & Felicite Manson Farmstead



The farmstead, built by the Mansons during the 1850s and '60s, is the heart of our living history program. Costumed demonstrators make use of the 1862 barn, a stunning 1860s-style kitchen garden, and an apple orchard with 1850s varieties. Tour the garden on your own, or join a ranger-led tour. Ask at the Visitor Center for details.

Champoeg State Heritage Area

- Phone
- Information
- Accessible Facility
- Accessible Restroom
- Fishing
- Dining
- History Nature Information
- Picnic
- Walking Trail (no recreational wheels)
- Bicycle Trail
- Interior Roads & Parking

